

CANISIUS COLLEGE

STATISTICAL ABSTRACT

Fall 2013

Prepared by:
Office of Institutional Research

Canisius College at a Glance

	Undergrad.	Graduate	Total
Enrollment, Fall 2013	3,084	1,453	4,537
Enrollment, Fall 2012	3,280	1,628	4,908
Percent Change in Enrollment	-6.0%	-10.7%	-7.6%
Number Full-time	2,825	618	3,443
Number Part-time	259	835	1,094
Percent Full-time	91.6%	42.5%	75.9%
Percent Part-time	8.4%	57.5%	24.1%
Credit Hours Attempt. Fall 2013	44,682	10,752	55,434
Credit Hours Attempt. Fall 2012	46,570	12,504	59,074
Percent Change in CH Attempted	-4.1%	-14.0%	-6.2%
FTE, Fall 2013	2,910	1,086	3,996
FTE, Fall 2012	3,056	1,238	4,294
Percent Change in FTE	-4.8%	-12.3%	-6.9%
Enrollment by College			
College of Arts and Sciences	1,636	84	1,720
School of Education & Human Serv.	431	1,058	1,489
Wehle School of Business	816	311	1,127
No College Designated	201	0	201
	3,084	1,453	4,537
Enrollment by Gender			
Percent Male	49.7%	37.5%	45.8%
Percent Female	50.3%	62.5%	54.2%
Average Age	20.0	29.2	23.1
On-campus Resident	1,397	40	1,437
Percent Resident	45.3%	2.8%	31.7%

Enrollment by Ethnicity	Number	Percentage
American Indian/Alaska Native	13	0.3%
Asian	88	1.9%
Black/African American	299	6.6%
Hispanic	137	3.0%
Native Hawaiian / Pacific Islander	2	0.04%
Non-resident Alien	175	3.9%
Two or more races	62	1.4%
Unknown	354	7.8%
White	3,407	75.1%
Enroll. by Entering CH Earned		
0 to 29	1,024	22.6%
30 to 59	691	15.2%
60 to 89	693	15.3%
90 and greater	676	14.9%
Graduate	1,453	32.0%
Enrollment by Student Type		
UG, Continuing	2,053	45.3%
UG, Cross Registered	68	1.5%
UG, High School Students	107	2.4%
UG, New First Time (Includes Kings)	682	15.0%
UG, Re-admit	4	0.09%
UG, Transfer	119	2.6%
UG, Transient	26	0.6%
UG, Visiting	25	0.6%
Grad, Continuing	1,047	23.1%
Grad, New First Time	401	8.8%
Grad, Other	5	0.1%
Enrollment by Residency		
Canadian	125	2.8%
International-Non Canadian	100	2.2%
New York Resident	3,871	85.3%
Out-of-State Resident	430	9.5%
Unknown	11	0.2%
Receiving Fed Pell Grants FT Undergrad.	874	30.9%
Receiving Fed Pell Grants PT Undergrad.	14	5.4%

ENROLLMENTS BY MAJOR

*Includes double counting

COLLEGE OF ARTS & SCIENCES

Undergraduate Programs

Graduate Programs

Code	Major	Count
ABEC	Animal Behavior	180
AHM	Art History	7
ANT	Anthropology	24
BCH	Biochemistry	45
BCHA	Biochemistry, ACS Certified	3
BIF	Bioinformatics	10
BIO	Biology	267
CHM	Chemistry	16
CHM	Chemistry, ACS Certified	7
CHM	Chemistry, Health Professions	21
CLLA	Classical Languages	0
CLSG	Classics, Greek	3
CLSL	Classics, Latin	6
COM	Communication Studies	148
CRJ	Criminal Justice	104
CRW	Creative Writing	43
CSC	Computer Science	49
CSC1	Computer Science	2
CSCC	Computer Science Certificate	1
DMA	Digital Media Arts	77
ECON	Economics	33
EN32	Pre-engineering 3+2	5
ENG	English	74
ENGR	Pre-Engineering	21
ENV	Environmental Sciences	14
EUR	European Studies	12
EVST	Environmental Studies	14
FRC	French	12
GER	German	16
HIS	History	69
HUM	Humanities, Bachelors	0
INT	International Relations	65
JRN	Journalism	32
LAS	Latin American Studies	2
MAT	Mathematics	39
MATS	Mathematics & Statistics	4
MDT	Clinical Laboratory Science	0
MLSC	Medical Laboratory Science	8
MUS	Music	7
MUSP	Music Performance	6
PHI	Philosophy	1
PHIH	Philosophy, Hypatian Scholar	8
PHI	Philosophy, Ignation Scholar	3
PHY	Physics	15
PSC	Political Science	110
PSY	Psychology	266
RST	Religious Studies	6
SOC	Sociology	33
SPA	Spanish	31
SSA	Social Sciences (AA), Adult Academic	0
SSC	Social Sciences (BA), Adult Academic	0
TLS	Technical/Liberal Studies	0
UND	Undecided	118
URS	Urban Studies	7
WSTC	Women's Studies, Certificate	3

Code	Major	Count
ANZ	Anthrozoology	47
ASN	Arts & Sciences Non- Matriculated	1
COM	Communication & Leadership	36

ENROLLMENTS BY MAJOR Cont'd

*Includes double counting

SCHOOL OF EDUCATION & HUMAN SERVICES

Undergraduate Programs

Code	Major	Count
ATM	Athletic Training	52
ECCH	Early Childhood/Childhood Education	37
EDAD	Adolescent Education	59
EDCH	Childhood Education	13
EDEC	Early Childhood Education	2
ELG	Elementary Education	0
HEW	Health & Wellness	84
PEHL	Physical/Health Education	59
PEM	Physical Education	0
PENT	Physical Education Non Teach	0
PESS	Physical Education Sport Studies	6
PHED	Physical Education, Birth-12	2
PS1	CC2CC - NCCC Radiologic	2
PS5	CC2CC - GCC Respiratory Care(OPS)	4
PS10	Telecomm Technician (Verizon)(OPS)	0
PS11	Professional Technical Studies(OPS)	1
SPE	Special Education	0
SPE1	Special/Childhood Education, Grades 1-	49
SPEB	Special/Early Childhood Education,	7
SPMT	Sport Management	57
UND	Undecided	2

Graduate Programs

Code	Major	Count
CMHC	Community Mental Health	110
CSH	Community & School Health (OPS)	21
CSP	College Student Personnel	57
EDA	School/Administration Supervision	21
EDAD	Adolescent Education	32
EDAO	Educational Administration, On-line	29
EDBM	Business & Marketing Education	4
EDC	Counseling & Human Services	0
EDCH	Childhood Education	44
EDD	Deaf Education	7
EDD1	Deaf Childhood Education Grades 1	8
EDD7	Deaf Adolescence Education Grades	0
EDDI	Differentiated Instruction	23
EDG	General Education	1
EDN	General Education, Non-matriculated	15
EDS	Teacher Education	0
EDT	Education Technologies, Certificate	13
EDTL2	Education Technologies & Emerging	3
EDTL	Teacher Leader Certificate	1
GEEX	Gifted Education Extension	1
HHP	Health & Human Performance	25
HIT	Health Information Technology	5
LTCY	Literacy	28
MCXT	Middle Childhood Extension	1
MSA	Sport Administration	42
NDEG	Non-Degree (OPS)	2
NTC1	Applied Nutrition Cert, Track 1(OPS)	0
NTR1	Applied Nutrition, Track 1(OPS)	14
NTR2	Applied Nutrition, Track 2(OPS)	14
ONES	TESOL	52
ONLT	Literacy, On-line	73
ONPE	Physical Education, On-line	85
ONSA	Sport Administration, On-line	128
ONSB	School Building Leadership, On-line	63
ONSD	School District Leadership, On-line	20
OSBD	School Building/District Leader, On-	21
OTT	Online Teaching & Training	0
PEM	Physical Education	1
PHED	Physical Education, Birth-12	28
READ	Reading Certification	0
RES1	Respiratory Care, Track 1(OPS)	6
RES2	Respiratory Care, Track 2(OPS)	3
SAC	School Agency Counseling	40
SBDL	School Building/District Leader	15
SBL	School Building Leadership	15
SDL	School District Leadership	7
SPE	Special Education	1
SPE1	Special Ed/Childhood Ed, Grades 1-6	10
SPE7	Special Education, Adolescent	2
SPEA	Special Education, Advanced	12
SPM1	Special Education, Childhood	10
SPM7	Special Education, Adolescence	6

ENROLLMENTS BY MAJOR Cont'd

*Includes double counting

WEHLE SCHOOL OF BUSINESS

Undergraduate Programs

Code	Major	FA13
ACC	Accounting	233
ACC1	Accounting	11
ACC2	Professional Accounting	13
AIS	Accounting Information Systems	57
ECO	Economics	67
ENT	Entrepreneurship	31
FIN	Finance	156
IBUS	International Business	60
MGT	Management	118
MIS	Information Systems	31
MKT	Marketing	160
UNBU	Undeclared Business	25
UND	Undecided	17

Graduate Programs

Code	Major	FA13
BUNM	Business, Non-matriculated	5
INTB	International Business	8
MBA	MBA, Part-Time Program	190
MBA3	Bachelors/MBA 3+2	0
MBAA	MBA, Accounting 150 Hour	18
MBAO	MBA, One Year Program	22
MBAP	MBA, Professional Accounting	47
MFA	Forensic Accounting	21

OTHER INFORMATION

Undergraduate Programs

Code	Major	FA13
AUDIT	Auditing	17
NDEG	Non-degree	184
	Double Majors	499
	Triple Majors	37
	Quadruple Majors	2

CREDIT HOURS BY DEPARTMENT AND SCHOOL

Fall 2012 Credit Hours

Department	Undergrad	Graduate	Total	% of School	% of College
Animal Behavior, Ecology, & Conservation	530	373	903	2.6%	1.6%
Biology	3015	0	3015	8.8%	5.2%
Chemistry	1673	0	1673	4.9%	2.9%
Classics	846	0	846	2.5%	1.5%
Communication Studies	2347	210	2557	7.5%	4.4%
Computer Science	497	0	497	1.5%	0.9%
English	2310	0	2310	6.7%	4.0%
English as a Second Language (ESL)	124	0	124	0.4%	0.2%
Fine Arts	1626	0	1626	4.7%	2.8%
First Year Seminar	1617	0	1617	4.7%	2.8%
History	2724	0	2724	8.0%	4.7%
Mathematics & Statistics	2622	0	2622	7.7%	4.5%
Military Science	311	0	311	0.9%	0.5%
Modern Languages	1209	0	1209	3.5%	2.1%
Philosophy	3222	0	3222	9.4%	5.6%
Physics	574	0	574	1.7%	1.0%
Political Science	1260	0	1260	3.7%	2.2%
Psychology	2412	0	2412	7.0%	4.2%
Religious Studies & Theology	2949	0	2949	8.6%	5.1%
Sociology, Anthropology & Criminal Justice	1782	0	1782	5.2%	3.1%
Undeclared	16	0	16	0.05%	0.03%
Arts & Sciences	33666	583	34249		

Department	Undergrad.	Graduate	Total	% of School	% of College
Counseling & Human Services		1368	1368	10.5%	2.4%
Teacher Education (1)	2152	1656	3808	29.3%	6.6%
Graduate Education & Leadership	354	3879	4233	32.6%	7.3%
Kinesiology	1838	1023	2861	22.0%	4.9%
Office of Professional Studies (2)		707	707	5.4%	1.2%
Education & Human Services	4344	8633	12977		

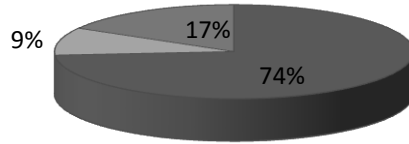
Department	Undergrad.	Graduate	Total	% of School	% of College
Accounting	1603	967	2570	24.2%	4.4%
Economics & Finance	2706	666	3372	31.7%	5.8%
Graduate Business Programs		117	117	1.1%	0.2%
Management	1734	1035	2769	26.1%	4.8%
Marketing & Information Systems	1574	225	1799	16.9%	3.1%
Wehle School of Business	7617	3010	10627		

Department	Undergrad.	Graduate	Total	% of School	% of College
Unaffiliated	182	1	183		0.3%
CANISIUS COLLEGE	45809	12227	58036		

(1) Starting in 2012 (201230) "Adolescence Ed". & "Education" are Combined in "Teacher Education".

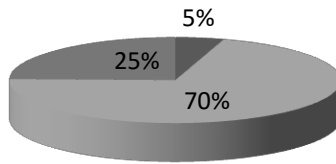
(2) Office of Professional Studies is a Department in Education & Human Services.

Undergraduate Credit Hours



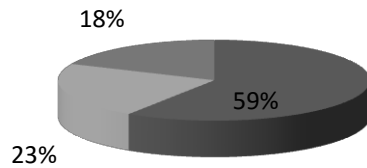
■ Arts & Sciences ■ Education and Human Services ■ Wehle School of Business

Graduate Credit Hours



■ Arts & Sciences ■ Education & Human Services ■ Wehle School of Business ■

Total Credit Hours



■ Arts & Sciences ■ Education & Human Services ■ Wehle School of Business ■